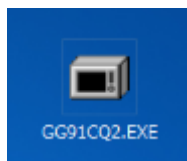




Connection with PC via USB cable

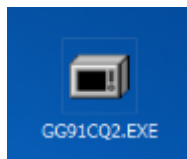
- Before start firmware update, install DP-MB500 series MFS Driver with USB connection and confirm that PC and DP-MB500 series machine are surely connected through the USB cable.
- This firmware update procedure have to done with USB connection.

1. First of all, download and paste the desired firmware (from the firmware list at the last page) on the desk top of the PC screen.



(Example)

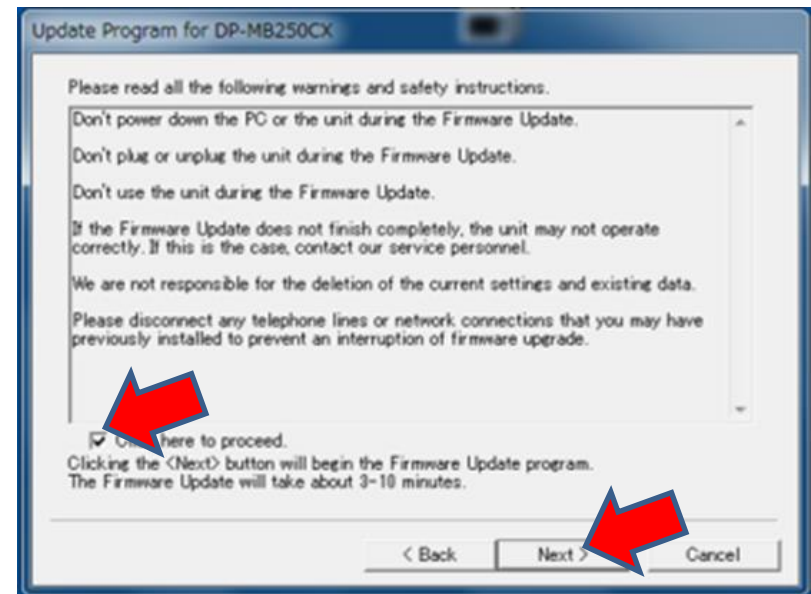
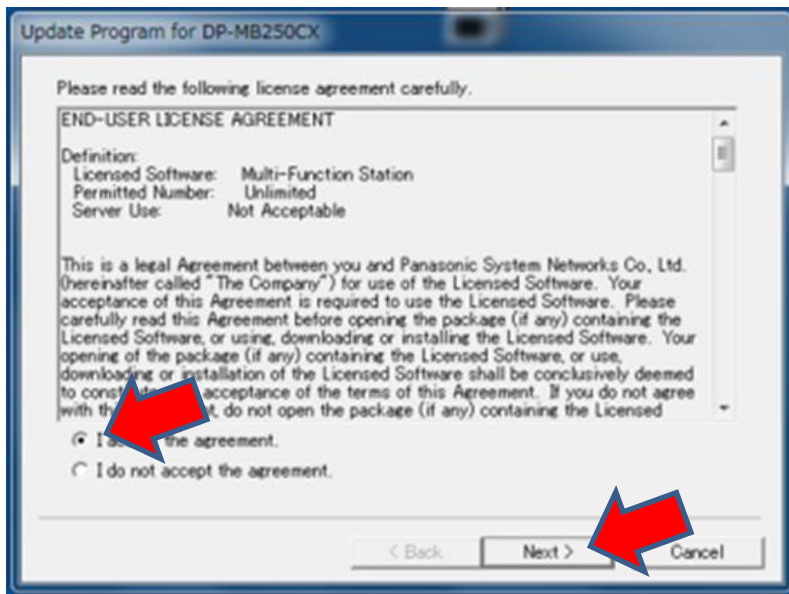
2. Connect the DP-MB500 series machine with PC by USB cable.
3. Execute the firmware (xxxxxx.EXE) by double-clicking the Icon.



(Example)

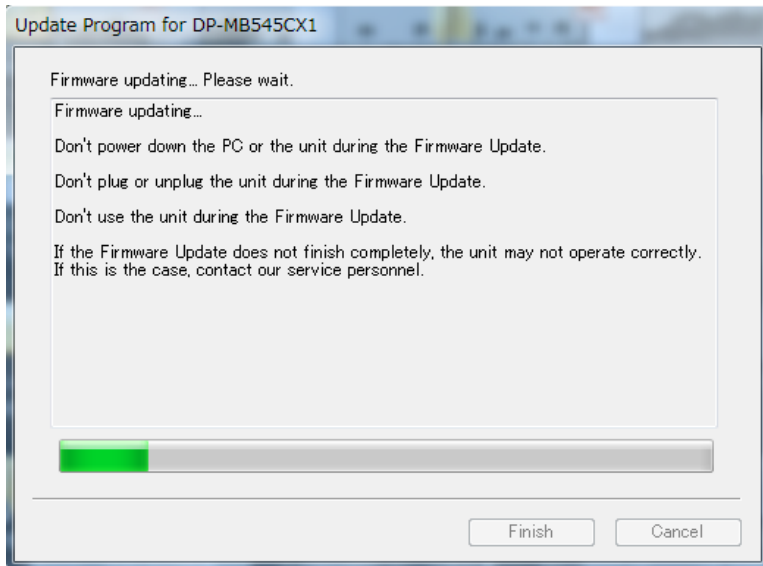
» Installing the firmware

4. After Several Confirmation, actual update procedure will start.
(follow the screen indication)



» Installing the firmware

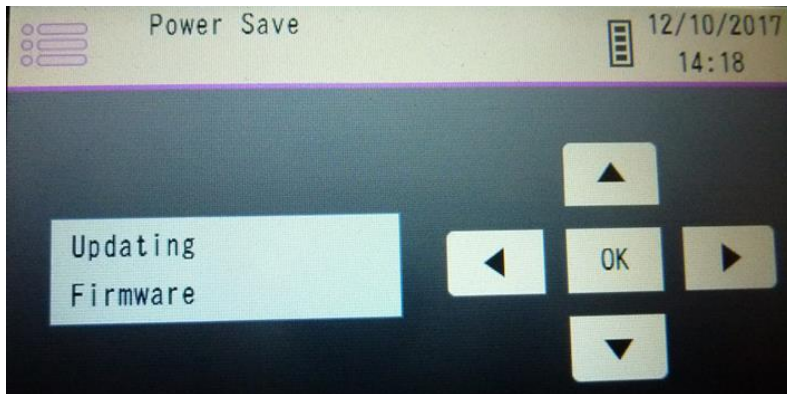
5. Status during updating the firmware



PC Screen



Blinking

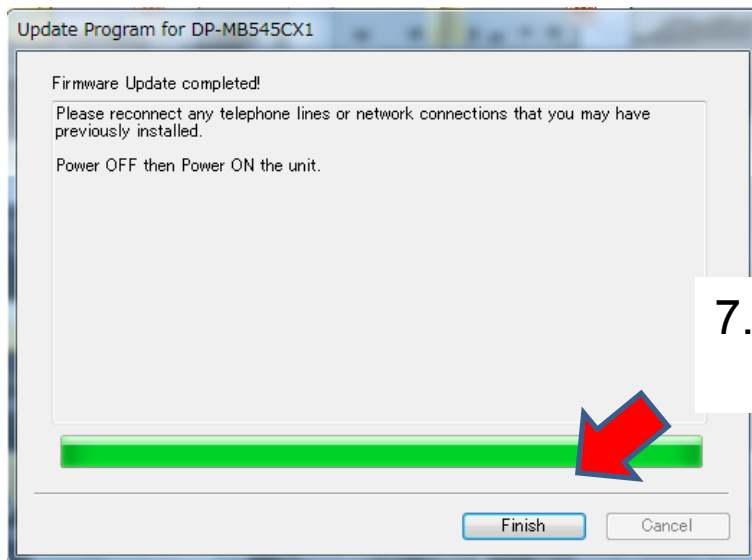


LCD Screen



» Installing the firmware

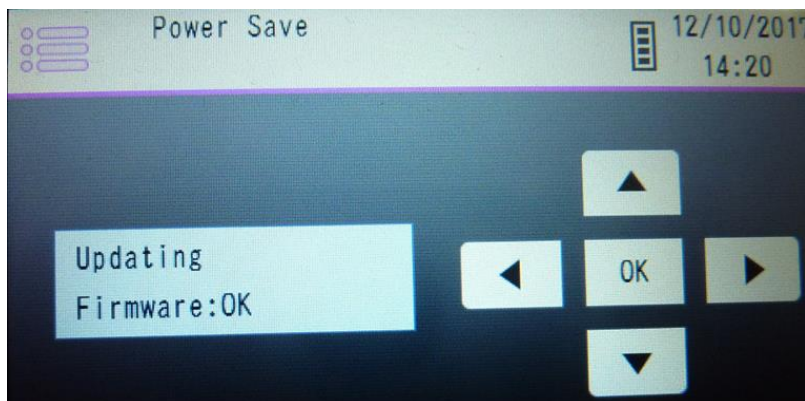
6. Status after finish installation



7. Press "Finish " button to close the "xxxxxx.EXE" program.

PC Screen

Both LED Lighting



LCD Screen





Finalizing

7. After pressing the “ Finish “ button, please proceed to

Turn the DP-MB500 machine power **OFF**
and then **ON**

8. Then please confirm if the “ Version” and “ Check Sum” of the DP-MB500 machine is correct or not.



Firmware Download List

- We list up the firmware only already ver. changed in the past.
(The firmware which not updated after mass-production, not listed)
- Please use the same model no.'s firmware for installation.

	Model No.	Ver.	Checksum	
1	DP-MB545JT	GI51JE	EF73	Download
2	DP-MB545CX	GI51CR	5BDA	Download
3	DP-MB545CX1	GI51BD	2846	Download
4	DP-MB545EU	GI51KC	2645	Download
5	DP-MB545LA	GI51WC	21A3	Download
6	DP-MB545RU	GI51RP	14BC	Download
7	DP-MB545SX	GI51IQ	D314	Download
8	DP-MB539CN	GI51TP	A6F9	Download
9	DP-MB537JT	GIV1JC	58C3	Download
10	DP-MB537EU	GIV1KC	90B9	Download
11	DP-MB536CX	GI41CQ	8993	Download
12	DP-MB536CX1	GI41BC	292B	Download
13	DP-MB536LA	GI41WC	D4E3	Download
14	DP-MB536SX	GI41IP	A38A	Download